

MT1440 / MT1840

TELESCOPIC HANDLERS



 **MANITOU**

www.manitou.com

MT 1440 / MT 1840

2 models, 8 versions to choose from



MT **1440**

14 m / 4 T



MT **1840**

18 m / 4 T



MANITOU: AT YOUR SIDE ON ANY CONSTRUCTION SITE

When it comes to all-terrain handling, MANITOU has been at your side on **all your construction sites for over 50 years!**

These MT 1440/1840 telescopic handlers are **high performers**: they have an excellent working envelope and a lifting **capacity of up to 4 tonnes**.

These handlers offer you unique **adaptability**:

- **Commonality of design** making them easy to use and maintain
- **Wide stabiliser legs** for unparalleled lateral and frontal **stability**
- **A choice of transmission**: torque converter or hydrostatic
- **Efficiency**: change the attachment within seconds

These trucks are true allies in your quest for **productivity** and **simplicity**.

High **performing** MANITOU telescopic handlers allow you to carry out all your construction work **safely** and **efficiently**.



SIMPLICITY

■ ■ Simplified **USAGE** and **MAINTENANCE**

COMMONALITY whatever the model

Spacious and comfortable cabin



Ergonomic dashboard

- All the information you need: direction of travel, wheel alignment, boom angle, fuel level, hour meter etc.
- **Stability indicator** cutting off aggravating movements. You choose between a **handling or suspended load mode** in order to optimise your handling.

JSM® : everything in the palm of your hand



- Attachment function control
- Extension/retraction control for the boom
- Forward/backward/neutral movement selector switch

Work **SIMPLY** and **SAFELY**



- Baskets capacity **up to 1000 kg** with **automatic locking of the rear axle**. (MT 14/18 'A' Models only).
- **Automatic Parking Brake** next to the hill start assistance button.
- **EASY CONNECT SYSTEM** allowing the depressurisation of the hydraulic attachment line without turning off the engine.
- Adjustable **continuous flow of hydraulics** to the auxiliary services.
- **Tilt lock** out facility for enhanced safety.
- **Digicode** as standard for security and immobilisation.
- **Radio control** (optional).



IDENTICAL MAINTENANCE whatever the model

- Engine, transmission, hydraulics, cab and chassis. All benefit from the same design.
- **Double opening of engine compartment** without the need for disassembly: save time during maintenance.



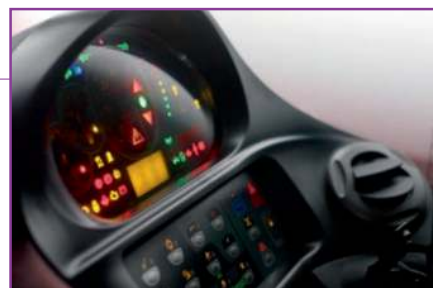
PANORAMIC CABIN: 360° VISIBILITY

SAFE AND QUICK ACCESS

via a large door
and non-slip steps

Machine MAINTENANCE and DIAGNOSIS

Periodic maintenance and diagnosis display on the **multifunction screen** on the dashboard.



PRODUCTIVITY

■ ■ PERFORMANCE and ADAPTABILITY

Power 102 HP

New generation engine
STAGE 3B with particle
filter.



Transmission adapted to your needs

hydrostatic or **torque convertor**
to fit your requirements (inching
optional).

Permanent 4 wheel drive

with **powerful braking** on both
axles.



Good ground clearance
up to **42 cm**



2 lifting heights

14 - 18 m

1 nominal capacity

4 T

■ Chassis levelling +/- **9°**



Good lateral and frontal stability:

The excellent stability allows loads to be easily and safely placed.

Good ground clearance on stabiliser legs:

Whatever the condition of the ground, the levelling of the machine on stabiliser legs is simple.

Turning circle

< 4 m



High
tearout
force

Three steering modes



4 wheel drive for short turns in restricted areas



Front wheel drive for road use



Crab steer for sideways approaches

Your MANITOU truck is a real **tool box...**






Thanks to the MANITOU **attachment system**, you can **easily equip your handler with numerous attachments within seconds**: forks, buckets, mixer buckets, baskets etc.



...for a **multitude of applications**

The **adaptable** MANITOU machines **meet all your working needs and optimise work time and productivity**:

- load placement
- distribution of materials on confined construction sites
- loading loose material
- positioning suspended loads
- lifting people

LOAD PLACEMENT				
Forks	Hook crane jib	Crane jib	Extendable roof crane jib	Winch
				

LOADING		
Construction bucket	4 in 1 Bucket (MT 1440 only)	Handling bucket
		

ACCESS	
Fixed basket 365 kg	Extendable basket 1000 kg
	

OTHERS	
Mixer bucket	Skip
	







Tailor-made finance to make the best use of your funds

You can plan the purchase of your forklift with peace of mind by using MANITOU* financing opportunities.

You will have simple solutions adapted to your needs and seasonal requirements. If you want to make a rapid investment, consider asking us for a personalised proposal to take your situation into account.

* MANITOU Finance solutions are available in certain countries.

MANITOU maintenance contract

2 levels of maintenance adapted to your needs. You are sure of:

- equipment always in good working condition
- a reduction of repair costs as a result of regular servicing
- authentic standardised services

- Labour
- Attendance costs



- Labour
- Attendance costs
- Parts and lubricants



MANIPLUS extension of guarantee

With MANIPLUS you can take out an extension of guarantee of 12 or 24 months.

EASY MANAGER

A simple and flexible system for fleet management (with or without geolocation) to provide optimum service from your machines. EASY MANAGER gives you:


- real-time materials management
- simple and easy way of managing your machinery activity and maintenance.
- maximise your asset and safeguard your equipment

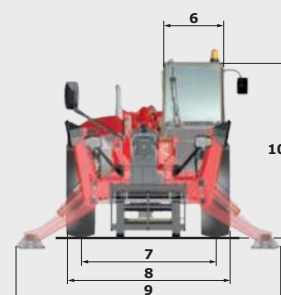
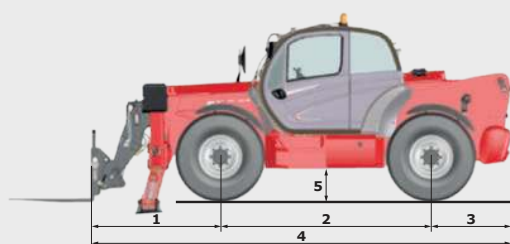


MANITOU spare parts

Utilising genuine MANITOU spare parts is sure to prolong the best performance capability of your machine. Your MANITOU dealer has access to a stock of 70,000 part numbers, available in 24 hours in Europe (48 hours outside Europe).

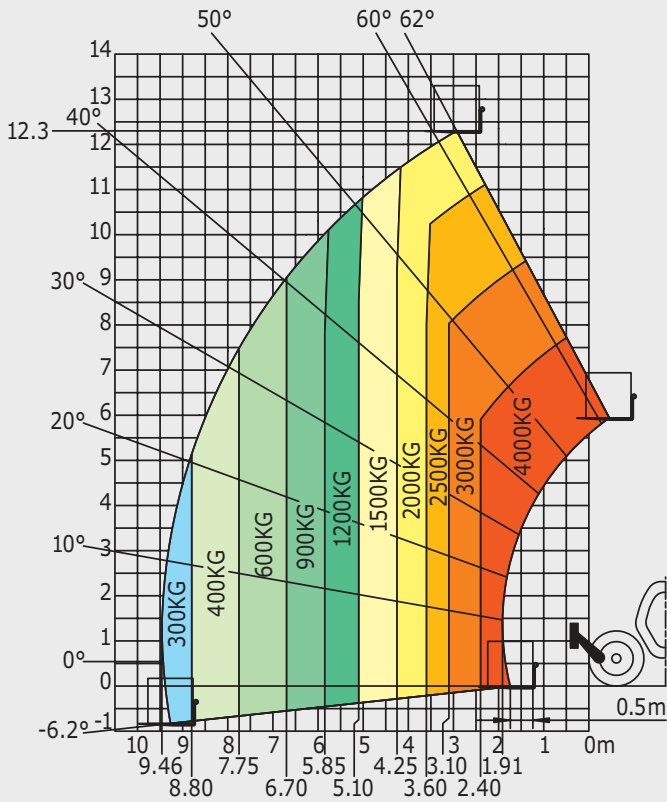


	MT 1440		MT 1440 A		MT 1440 H		MT 1440 HA	
Lifting								
Max. capacity					4000 kg			
Max. lifting height					13.53 m			
Max. outreach					9.46 m			
Break-out force with bucket					7400 daN			
Unladen time								
Lifting	15.5 secs		15.7 secs		15.5 secs		15.7 secs	
Lowering	11.6 secs		13.3 secs		11.6 secs		13.3 secs	
Extension	16.5 secs		19.2 secs		16.5 secs		19.2 secs	
Retraction	11.9 secs		14.8 secs		11.9 secs		14.8 secs	
Crowd					4 secs			
Dump					4 secs			
Tyres					400/80-24			
Braking								
Service brake					oil immersed multi-disc braking on front/rear axles			
Parking brake					automatic negative handbrake			
Engine								
Type					PERKINS - STAGE 3B			
Cubic capacity					854E-E34TA			
Power					3400 cm³			
Max. torque					102 HP/75 kW			
Injection					420 Nm - 1400 rpm			
Cooling					direct			
Laden drawbar pull					water			
			10700 daN				8000 daN	
Transmission			torque converter 4 wheel drive				hydrostatic 4 wheel drive	
Reversing shift					electrohydraulic control			
Number of gears (forward/reverse)			4/4				3/3	
Max. travel speed (may vary according to applicable regulations)					25 kph or 35 kph			
Steering mode					4 wheel steer - 3 steering modes			
								
Controls								
					JSM® Joystick multi - function			
					load limiter cut off system - EN15000 norm			
Hydraulics								
Pump					gear type with flow splitter - 170 l/min - 270 bar			
Capacities								
Hydraulic oil					135 l			
Fuel					140 l			
Unladen weight (with forks)	10900 kg		11600 kg		10900 kg		11600 kg	
Dimensions								
1. Front wheel centre to carriage					1.90 m			
2. Wheelbase					3.07 m			
3. Rear wheel centre to rear face					1.16 m			
4. Overall length to carriage					6.13 m			
5. Ground clearance					0.37 m			
6. Overall width of cab					0.89 m			
7. Inside tyre width					1.96 m			
8. Overall width					2.37 m			
9. Overall width (stabilizers lowered)					3.79 m			
10. Overall height					2.45 m			
Standard forks (length x width x thickness)					1200 x 125 x 50 mm			
Turning radius (over tyres)					3.97 m			
Frame levelling					+/- 9°			
Carriage rotation (crowd/dump)					12°/114°			
Noise and vibration								
Noise at driving position (LpA)					82 dB			
Environmental noise (LwA)					106 dB			
Vibration to whole hand/arm					<2.5 m/s²			

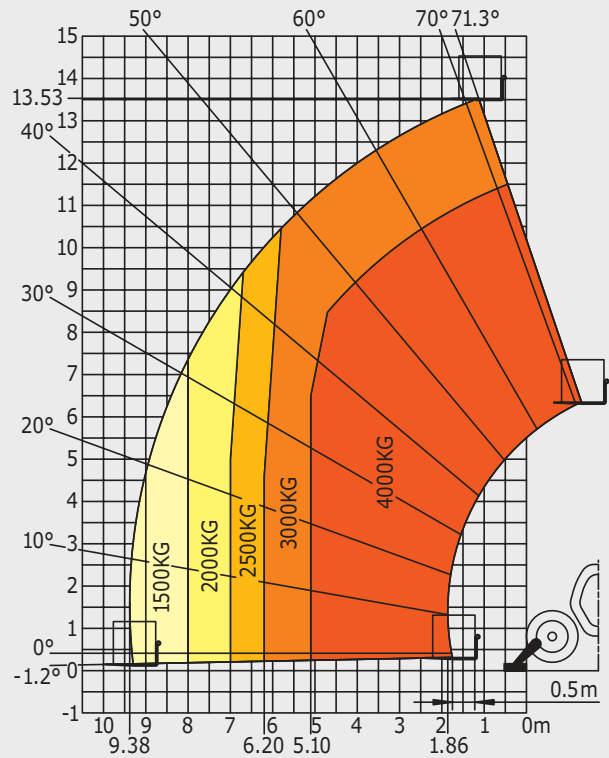


Rough terrain load chart standard EN1459 B

Machine on tyres with forks

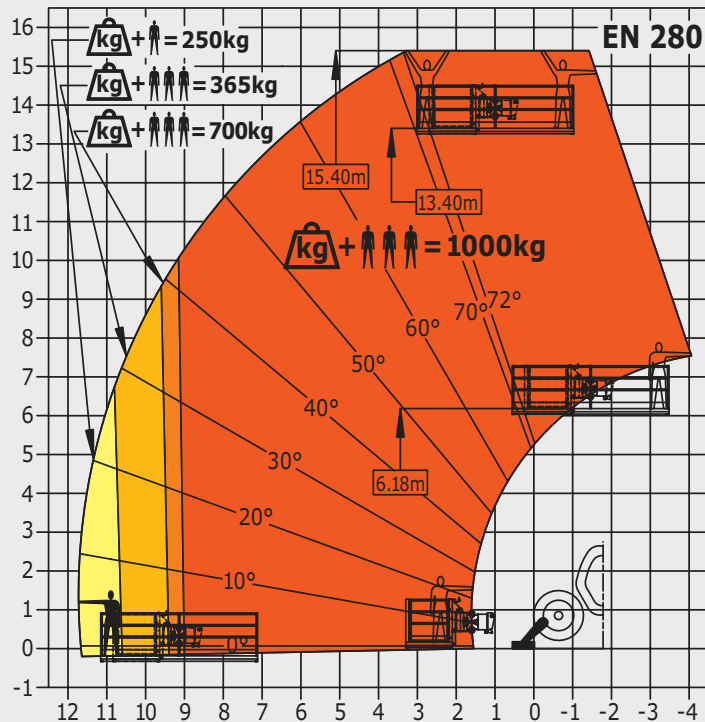


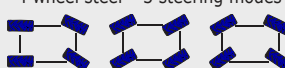
Machine on stabilizers with forks

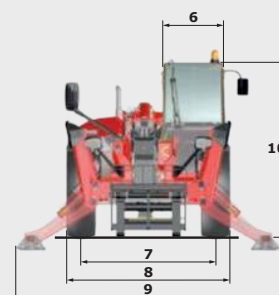
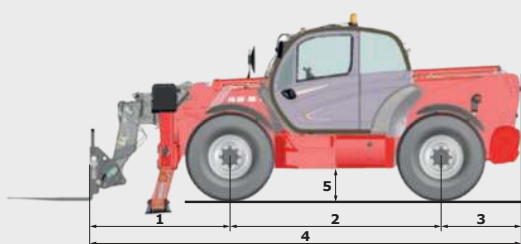


Machine on stabilizers with platform

(MT 1440 A and MT 1440 HA versions)

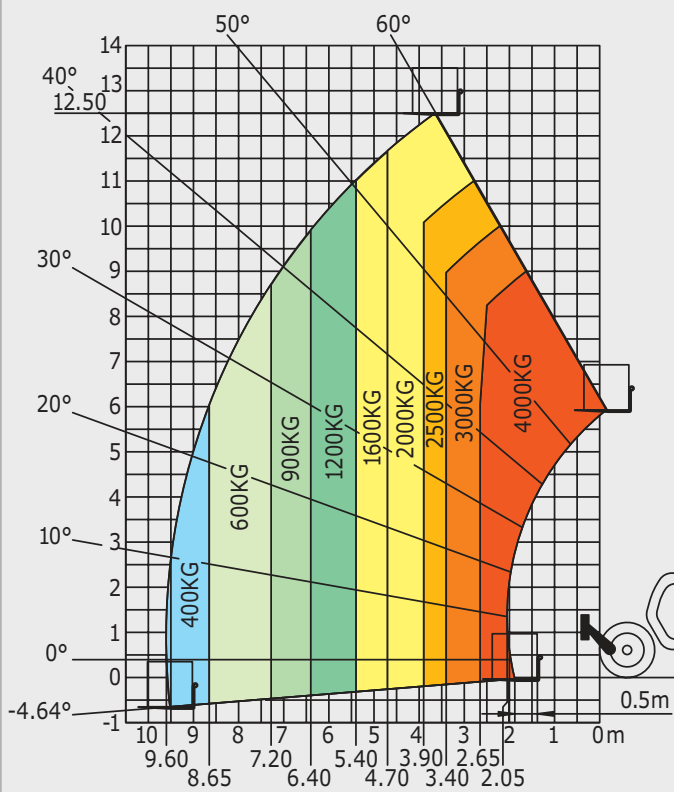


	MT 1840		MT 1840 A	MT 1840 H	MT 1840 HA
Lifting					
Max. capacity			4000 kg		
Max. lifting height			17.55 m		
Max. outreach			13.08 m		
Break-out force with bucket			7900 daN		
Unladen time					
Lifting	17.3 secs	18.0 secs	17.3 secs	18.0 secs	
Lowering	12.7 secs	14.4 secs	12.7 secs	14.4 secs	
Extension	16.1 secs	17.9 secs	16.1 secs	17.9 secs	
Retraction	15.6 secs	16.5 secs	15.6 secs	16.5 secs	
Crowd			5 secs		
Dump			4 secs		
Tyres			440/80-24		
Braking					
Service brake	oil immersed multi-disc braking on front/rear axles				
Parking brake	automatic negative handbrake				
Engine	PERKINS - STAGE 3B				
Type	854E-E34TA				
Cubic capacity	3400 cm³				
Power	102 HP/75 kW				
Max. torque	420 Nm - 1400 rpm				
Injection	direct				
Cooling	water				
Laden drawbar pull	10300 daN		7300 daN		
Transmission	torque converter 4 wheel drive		hydrostatic 4 wheel drive		
Reversing shift	electrohydraulic control				
Number of gears (forward/reverse)	4/4		3/3		
Max. travel speed (may vary according to applicable regulations)	25 kph or 35 kph				
Steering mode	4 wheel steer - 3 steering modes				
					
Controls	JSM® Joystick multi - function load limiter cut off system - EN15000 Norm				
Hydraulics					
Pump	gear type with flow splitter - 170 l/min - 270 bar				
Capacities					
Hydraulic oil	135 l				
Fuel	140 l				
Unladen weight (with forks)	11700 kg	12400 kg	11300 kg	12000 kg	
Dimensions					
1. Front wheel centre to carriage	2.04 m				
2. Wheelbase	3.07 m				
3. Rear wheel centre to rear face	1.16 m				
4. Overall length to carriage	6.27 m				
5. Ground clearance	0.42 m				
6. Overall width of cab	0.89 m				
7. Inside tyre width	1.96 m				
8. Overall width	2.42 m				
9. Overall width (stabilizers lowered)	3.79 m				
10. Overall height	2.50 m				
Standard forks (length x width x thickness)	1200 x 125 x 50 mm				
Turning radius (over tyres)	4.01 m				
Frame levelling	+/- 9°				
Carriage rotation (crowd/dump)	12°/114°				
Noise and vibration					
Noise at driving position (LpA)	82 dB				
Environmental noise (LwA)	106 dB				
Vibration to whole hand/arm	<2.5 m/s²				

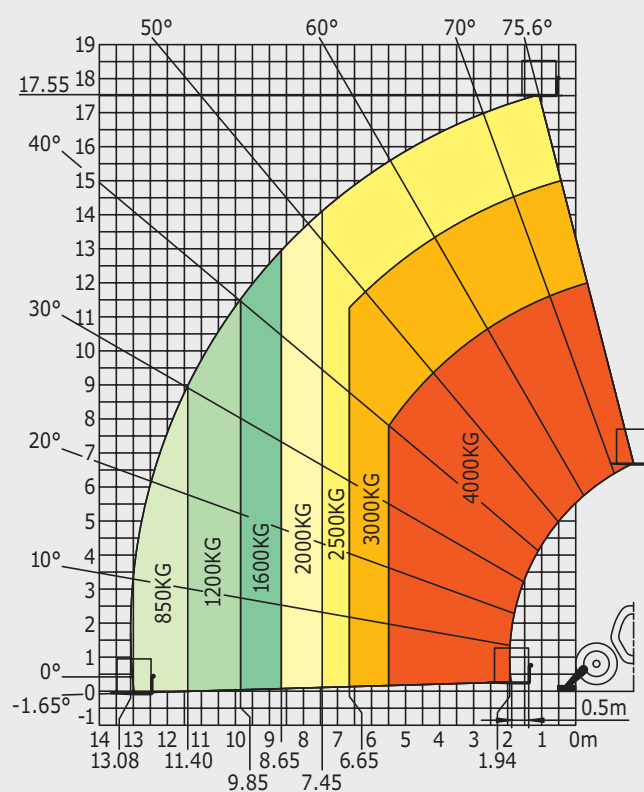


Rough terrain load chart standard EN1459 B

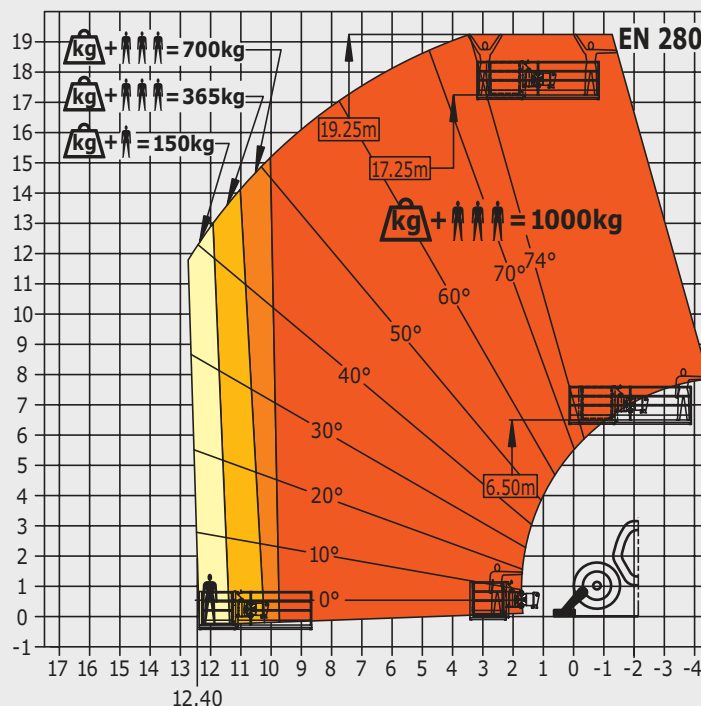
Machine on tyres with forks



Machine on stabilizers with forks



Machine on stabilizers with platform (MT 1840 A and MT 1840 HA versions)



Your nearest **MANITOU** dealer:



Head office:
B.P. 249 - 430 rue de l'Aubinière - 44158 Ancenis Cedex - France
Tel: 00 33 (0)2 40 09 10 11 - Fax: 00 33 (0)2 40 09 10 97
www.manitou.com